



# FIELDHOUSE

T: +44 (0)20 7013 0770  
F: +44 (0)20 7731 1964  
PROPERTY@FHRES.CO.UK  
FHRES.CO.UK



## Flat 2, 302B Bath Road, Hounslow, TW4 7DN

We are pleased to offer To Let this One Double bedroom apartment located moments from Hounslow West tube station.

The property is situated above commercial premises and comprises an entrance hallway, open plan living room and kitchen one double bedroom and a shower room.

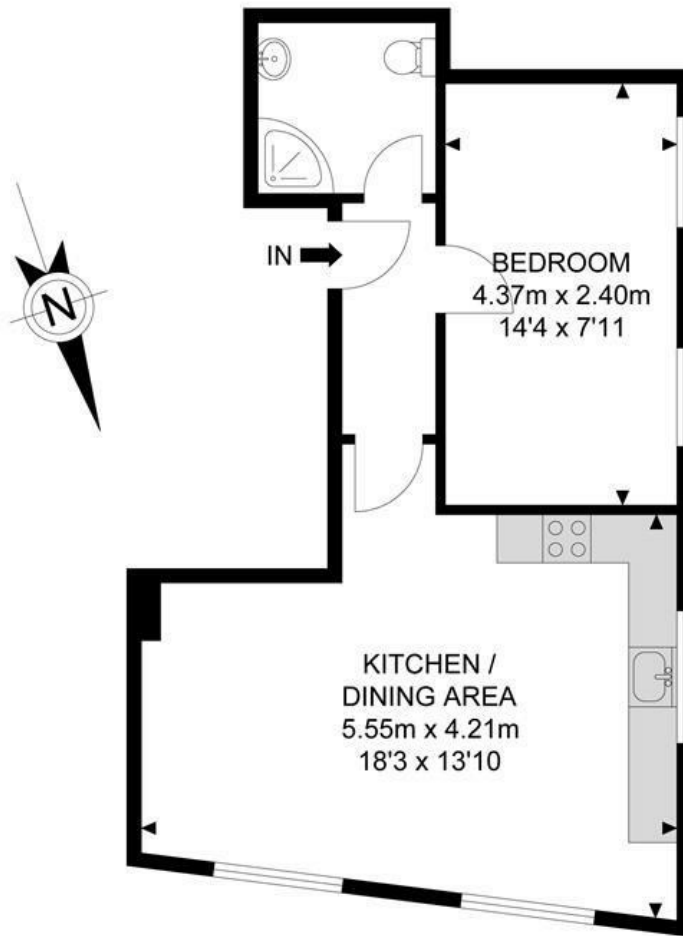
Available from immediately on an Unfurnished basis. Ideal for single occupants or a couple.

Minimum Length of Tenancy: 12 Months  
Council Tax: Hounslow Borough Council  
Council Tax Band: B

- DOUBLE BEDROOM
- MODERN OPEN PLAN KITCHEN WITH INTEGRATED APPLIANCES
- MODERN FULLY TILED SHOWER ROOM

**£1,425 PCM\***

# Bath Road



## 1st Floor



APPROX. GROSS INTERNAL FLOOR AREA 404.72 SQ FT / 37.60 SQM

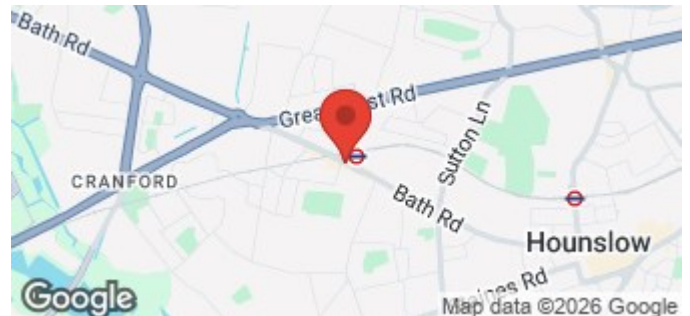
Whilst every attempt has been made to ensure the accuracy of the floor plan contained here, measurements of doors, windows, rooms and any other items are approximated and no responsibility is taken for any error, omission or mis-statement. This plan is for illustrative purposes only and should be used as such by any prospective purchaser. The service, system and appliances shown have not been tested and no guarantee as to their operability or efficiency can be given.

© SpacePhoto

Photography and Floor Plan

Energy Efficiency Rating		Current	Potential
Very energy efficient - lower running costs			
(92 plus) <b>A</b>			
(81-91) <b>B</b>			
(69-80) <b>C</b>			
(55-68) <b>D</b>			
(39-54) <b>E</b>			
(21-38) <b>F</b>			
(1-20) <b>G</b>			
Not energy efficient - higher running costs			
<b>England &amp; Wales</b>	EU Directive 2002/91/EC		

Environmental Impact (CO <sub>2</sub> ) Rating		Current	Potential
Very environmentally friendly - lower CO <sub>2</sub> emissions			
(92 plus) <b>A</b>			
(81-91) <b>B</b>			
(69-80) <b>C</b>			
(55-68) <b>D</b>			
(39-54) <b>E</b>			
(21-38) <b>F</b>			
(1-20) <b>G</b>			
Not environmentally friendly - higher CO <sub>2</sub> emissions			
<b>England &amp; Wales</b>	EU Directive 2002/91/EC		



### FIELDHOUSE RESIDENTIAL LIMITED

Registered Address: 94 Wandsworth Bridge Road, London SW6 2TF  
Registered in England No. 5097508 VAT No. GB 839 5267 87

